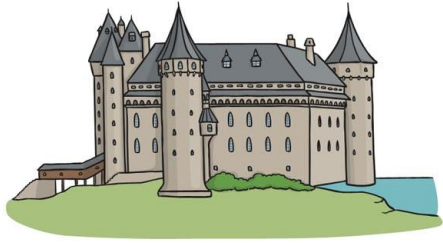




## Suffix (for nouns): -dom



**Meaning:**  
Place or state  
of being

kingdom freedom stardom

## Suffix (for nouns): -ist



**Meaning:**  
person that  
does something

scientist cyclist racist

## Suffix (for nouns): -ness



**Meaning:**  
A state of  
being

kindness wellness nervousness

## Suffix (for nouns): -ship

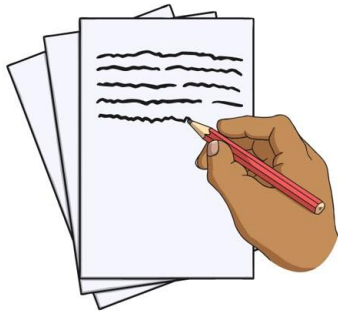


**Meaning:**  
A position  
held

friendship  
dictatorship leadership



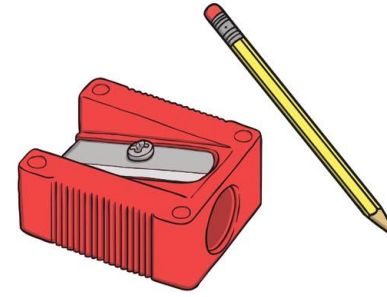
## Suffix (for verbs): -ify, -fy



**Meaning:**  
Make or  
become

simpl**ify**     rat**ify**     satisf**ify**

## Suffix (for verbs): -en



**Meaning:**  
Become

shar**pen**     streng**then**     loos**en**

## Suffix (for verbs): -ment



**Meaning:**  
The action of

mov**ement**

disagre**ement**     judg**ement**

## Suffix (for adjectives): -able, -ible



**Meaning:**  
Capable of  
being

ed**ible**     persu**able**     collaps**ible**



## Suffix (for adjectives): -esque



**Meaning:**  
In the manner  
of, resembling

pictures**esque**      grotes**esque**

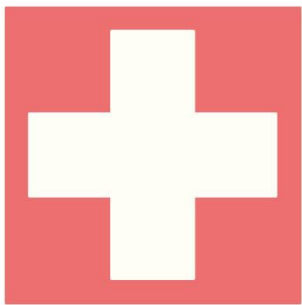
## Suffix (for adjectives): -ful



**Meaning:**  
Full of, known  
for

hate**ful**      care**ful**      beauti**ful**

## Suffix (for adjectives): -ical, -ic



**Meaning:**  
Having the  
character of

musi**cal**      criti**cal**      medi**cal**

## Suffix (for adjectives): -ish



**Meaning:**  
Having the  
quality of

book**ish**      child**ish**      sheep**ish**





## Suffix (for adjectives): -less

**Meaning:**  
Without any



fearless carelessly talentless

## Suffix (for adjectives): -ous, -ious

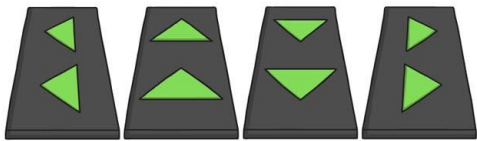
**Meaning:**  
Having the  
qualities of



jealous mischievous famous

## Suffix (for adverbs): -ward, -wards

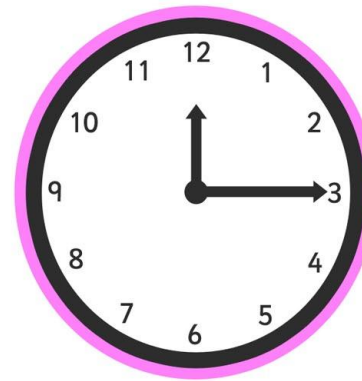
**Meaning:**  
Direction



backwards towards inwards

## Suffix (for adverbs): -wise

**Meaning:**  
In relation to



clockwise likewise otherwise